



# Path Finder

*Advanced Windows-Based Messaging System*



## PathFinder

Advanced Windows-Based Messaging System

PathFinder is our most sophisticated and complete messaging system. More than just voice mail, PathFinder is a powerful Windows-based messaging platform that allows workgroups to share voice, fax, and e-mail messages using their desktop computers and standard e-mail applications\*. Desktop Call Control (DCC) allows users to prioritize and route incoming calls accordingly. Text-to-Speech allows travelers and mobile workers to access and respond to e-mails by telephone. With PathFinder, the phone, the computer and the person converse, allowing its users to become productive in new and ever-changing ways.

### PathFinder starts as a fully-featured Voice Processing System, offering:

- Voice messaging
- Auto-attendant
- Optional Chalk Talk Module for schools

### When connected to a Local Area Network (LAN), PathFinder becomes an advanced communications center, or "server," offering additional, optional modules such as:

- OneLook Unified Messaging (POP3/IMAP4 standard)
- Desktop Call Control (DCC) and Desktop Mailbox Editing (DME)

- VPIIM Networking (Voice Protocol Internet Messaging Standard)

- Text-to-Speech for e-mail reading over the phone

As a Windows-based voice processing server, PathFinder can be connected to a LAN, WAN, VPN, or even the Internet. PathFinder uses TCP/IP, the standard protocol for client/server applications.

### Voice Messaging Made Simple

PathFinder integrates easily with most popular telephone systems and offers a host of administrative and user conveniences. Administrators will appreciate the Windows®-based programming screens, remote access, easy reporting and upgrade capabilities. Users will value such features as message speed and volume control, date and time stamp, multiple greetings, personal distribution lists, call screening, message forwarding and paging capability.

### Advanced Auto Attendant

PathFinder allows for operator-free call reception and transfer for any or all or selected lines and times. With an unlimited number of auto-attendant menus, PathFinder will meet the requirements of both simple and complex call routing applications.



\*Requires additional hardware for fax.



## OneLook™ Unified Messaging

OneLook™ Unified messaging allows all messages – voice, e-mail, and faxes, to be received in one convenient location, a user's e-mail inbox. PathFinder uses POP3 and IMAP4, which are open standards that allow integration with several e-mail applications, such as Microsoft Outlook and Outlook Express.

OneLook™, Desktop Call Control (DCC) and Desktop Mailbox Editor (DME) are sold together on a per user basis. (5 users, 100 users or site license)

## Desktop Call Control (DCC)

Desktop Call Control is a powerful tool that enables users to interact with an incoming PathFinder call from their desktop PC prior to answering the call. Users can set DCC up so the callers must first identify themselves by stating their name or entering their telephone number, whichever the user prefers. Users then have a variety of options to choose from in handling the call:

- Accept the call
- Hold the call
- Send to voice mail
- Transfer the call
- Play a message to the caller

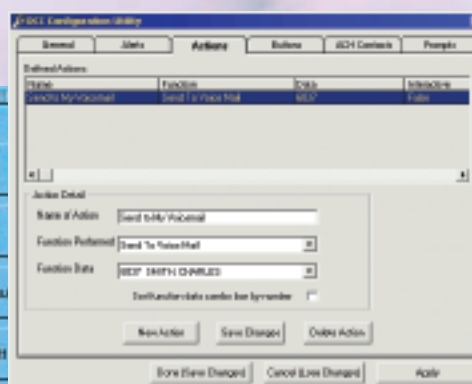
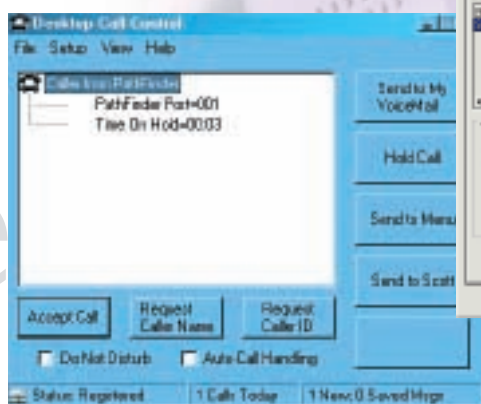
Additionally, specific call handling rules can be set up to differentiate high-priority calls from low-priority calls and route them accordingly, without user intervention. Desktop Call Control uses TCP/IP so it can be used to alert remote PC users even over the Internet, of all calls.

## Desktop Mailbox Editor (DME)

Desktop mailbox editor is an administrative tool that allows users with a sound card and microphone to customize their mailbox greetings from the desktop. This enables subscribers with special scheduling requirements to easily customize their mailbox greetings accordingly. As many as nine time-sensitive greetings can be recorded.

*The desktop mailbox editor also allows the user to have desktop control of:*

- Name and password
- Notification settings – the user can choose to be notified based on; dates, time-of-day, day-of-week, urgent, mailbox ID or e-mail address of message sender.
- E-mail contacts and responses – the contacts database stores a user's personal list of names, telephone numbers, and e-mail addresses. This user-maintained list will enable the user to reply to a voice mail message by auto-dialing the contact directly, or sending a pre-written e-mail response. Yes, with PathFinder, you can listen to a voice mail message and reply with an e-mail message. To automatically dial a party in response to an e-mail message, simply dial "60" while listening to their message. To send an e-mail response, dial "54" then choose from one of the nine pre-written e-mail responses, all from your telephone.





# PathFinder Option Modules

Customize PathFinder to Meet Your Unique Requirements

## OPTION MODULE



ChalkTalk is an automated information system specially designed for elementary, secondary and high schools. ChalkTalk is an optional module for PathFinder that offers features that are invaluable to schools, such as:

- Homework hotline
- Substitute teacher locator
- Absentee student notification
- School closing or emergency notification
- Student activity hotlines
- Question and answer sessions
- Import Function Allows a database (in Excel format) to be imported and used to create call lists.

ChalkTalk is not limited to school environments. Any business requiring automated outbound calling can increase productivity by using ChalkTalk.

## OPTION MODULE

### Text-to-Speech E-mail Reading

Perfect for the traveling business person or mobile workforce, PathFinder can be called upon to read e-mails over the telephone. Using a synthesized voice, the PathFinder first reads where, when and who the e-mail came from, then proceeds to read the body of the e-mail. Users can choose to reply to the e-mail with a pre-written response using DME, send a .wav file, or they can have the PathFinder look up the sender's phone number, dial it and speak directly to the Sender.

## OPTION MODULE

### VPIM Networking

VPIM Networking provides convenient methods for exchanging messages between multiple PathFinder systems utilizing the LAN/WAN/Internet as the transport medium.